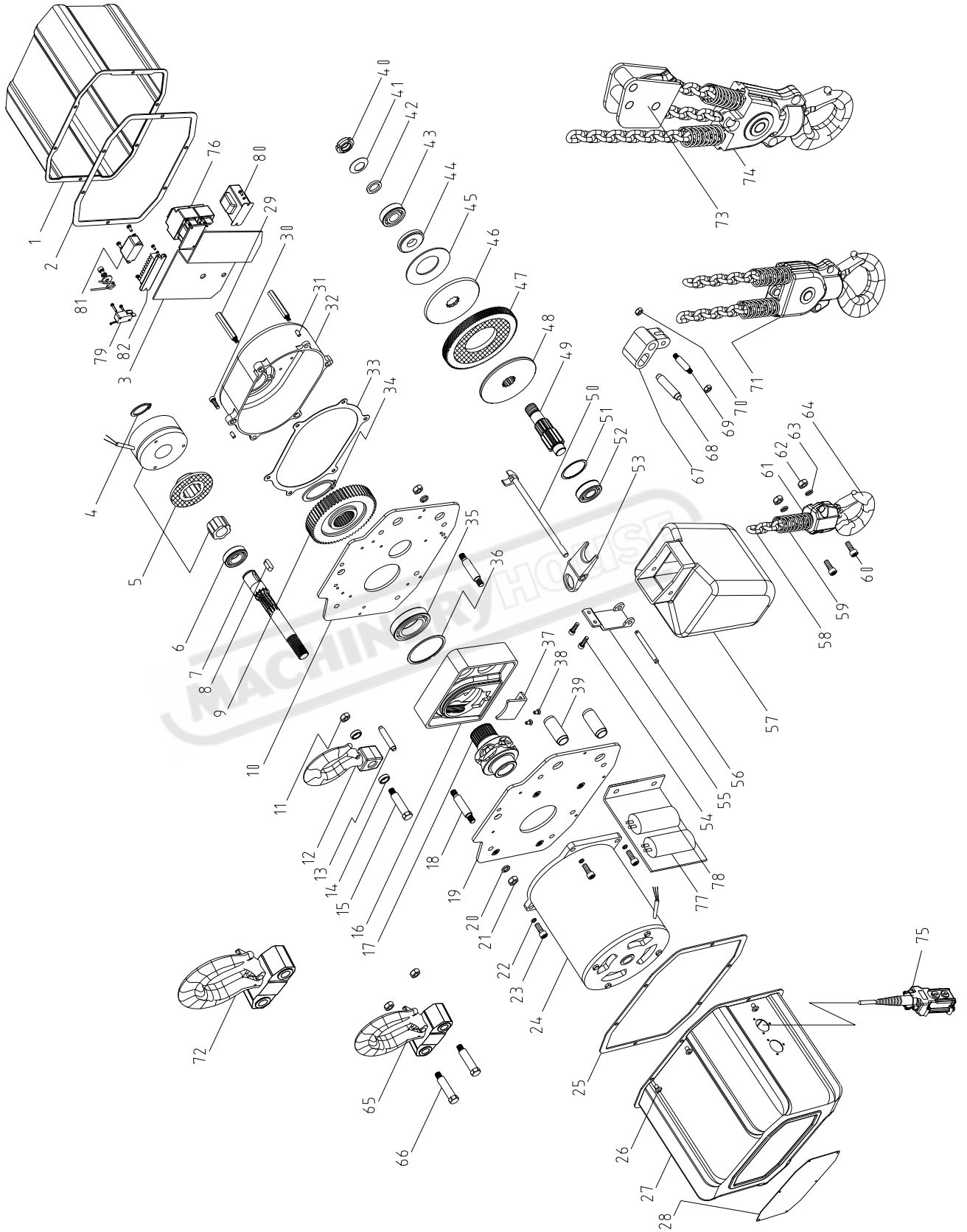


# 9、EXPLODED DRAWING



## 10、Parts List

No.	Part name	Quantity	NO.	Part name	Quantity
2	Cover A	1	42	Nut washer	1
2	Motor cover packing	1	43	Rolling bearing 6004Z	1
3	Electric board	1	44	Spring set	1
4	Axle race 25	1	45	Spring	1
5	Brake assembly	1	46	Friction disk pressing panel	1
6	Rolling bearing 6005Z	1	47	Washer A	1
7	Pinion gear A	1	48	Limit device base	1
8	Flat key 8×7×20	1	49	Pinion B	1
9	Master gear B	1	50	Limiter rotating axle	1
10	Right side plate	1	51	Stop ring 47	1
11	Hex nut M10	10	52	Rolling bearing 6204ZN	1
12	Top hook	1	53	Limiter baffle	1
13	Hook holder stop lever	1	54	Screw M6×16	2
14	Hook axle washer	2	55	Chain container hanging plate	1
15	Hook axle	1	56	Connecting pole	1
16	Chain container	1	57	Chain container	1
17	Chain sprocket	1	58	Load chainφ7.1×21	1
18	Staying pole	4	59	Limit spring	2
19	Left side plate	1	60	Hex bolt M8×30	2
20	Spring washer 10	8	61	Bottom hook assembly	2
21	Hex nut M10	8	62	Hex nut M8	2
22	Hex screw M8×20	4	63	Spring washer 8	2
23	Hex screw M8×20	4	64	Bottom hook	1
24	Motor assembly	1	65	Top hook assembly(2t)	1
25	Motor cover packing	1	66	Hook axle (2t)	2
26	Screw M6×8	12	67	Chain suspension holder (2t)	1
27	Cover B	1	68	Connecting pin(2t)	1
28	Name plate	2	69	Pin (2t)	1
29	Rivet screw	2	70	Hex nut M8(2t)	2
30	Hex screw M6×20	4	71	Bottom hook assembly (2t)	1
31	Spring locating pin 6×16	2	72	Top hook assembly(3t)	1
32	Gear case	1	73	Top pulley assembly (3t)	1
33	Gear case space	1	74	Bottom hook assembly (3t)	1
34	Axle race 42	1	75	Push button	1
35	Rolling bearing 6009ZN	1	76	contactor	3
36	Stop ring 75	1	77	Run capacitor (30 μ F)	1
37	Load chain baffle	1	78	Start capacitor (170 μ F)	1
38	Screw M6×10	2	79	Limit switch	2
39	Conduit	2	80	transformer	1
40	Nut M20×1.5	1	81	rectifier	1
41	Stop washer 20	1	82	Amphenol connector	1

# 11. ELECTRICAL DRAWING

